

School Mission

St Bernard's Catholic school, founded by the Sisters of St Joseph, shares in the educational mission of the church as part of St Bernard's

Parish OUR VISION

Learning is child-centred, where children are prepared as life-long learners to meet challenges as compassionate Christian members of our community.

OUR MISSION

To develop and nurture an environment where children learn about themselves, their world and God:

- By working in partnership with families, staff and the parish community
- By valuing the diversity of all members of our community
- By experiencing and living a Christian life in the Catholic faith.
"Your light guides"

"Your light guides"



ST BERNARD'S CATHOLIC SCHOOL

**1823 LOGAN ROAD UPPER MT
GRAVATT 4122**

Tel: (07) 3849 4800

Fax: (07) 3349 1436

Email: pupmtgravatt@bne.catholic.edu.au

SCHOOL CONTACT PERSONNEL

**Principal
Patricia McMahon**

**APRE
Denise Child**

**Support Teacher (IE)
Carol Schultz**

**Guidance Counsellor
Kirsteen Bostock**



Brisbane Catholic Education Centre

Enrolment Application

and

Support Procedures

for

Students requiring Significant

Educational Adjustments

Introduction and Rationale

The Enrolment Application and Support Procedures for Students requiring Significant Educational Adjustments operates within the Policy – Students with Disabilities for Brisbane Catholic Education schools.

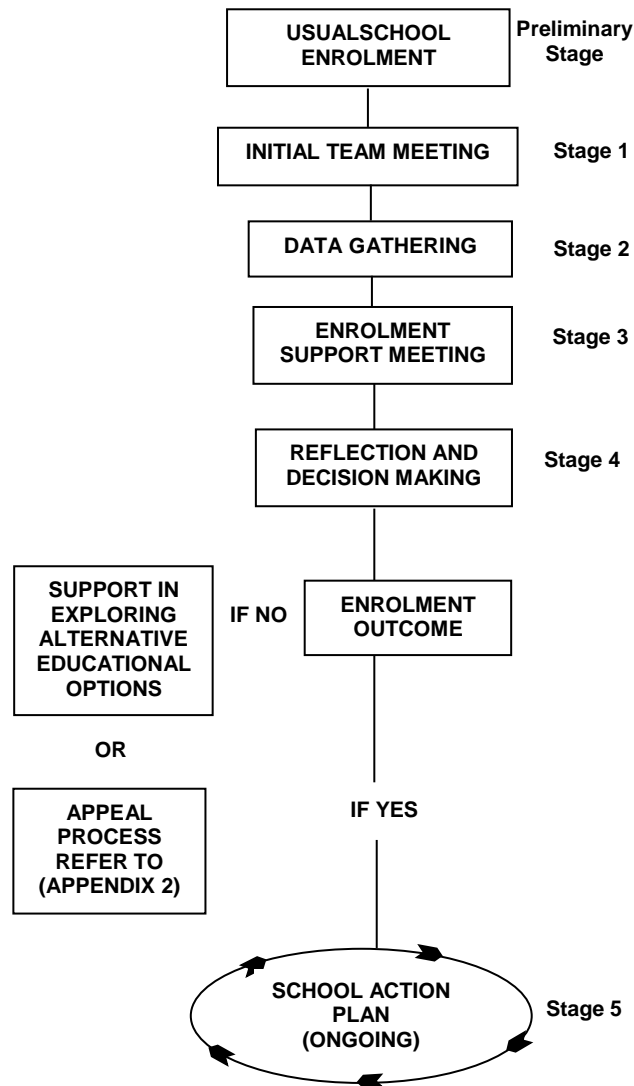
This policy statement, consistent with the Vision Statement and Strategic Renewal Framework 2007-2011, reflects the ongoing commitment of Brisbane Catholic Education to the incorporation of inclusive practices in schools and is guided by the principles of justice as reflected with Church, education and legal areas. The enrolment of a student requiring significant educational adjustments is the concern of the whole school community within the church.

The process seeks to reveal and clarify the characteristics of the learner, and to assess the relevant adjustments for accessing the learning and the implications of these for the school, the family and the student.

A partnership approach is foundational to this process and leads to an appropriate response to the student's educational needs. The enrolment application and support procedures are used when it is considered likely that significant educational adjustments will be needed to support a student's initial enrolment and/or for ongoing service provision.



ENROLMENT APPLICATION AND SUPPORT PROCEDURES For Students requiring Significant Educational Adjustments



Preliminary Stage

- Make Application for Enrolment



Stage 1 Parent Meeting

- **Student Enrolment Team meeting preparation**
- **Partnership Formed**



Stage 2 Data Gathering

- **Observe/Collect Data**
- **Explore Needs**



Stage 3 Enrolment Support Meeting

- **Examine Implications**
- **Partnership Strengthened**



Stage 4 Reflection & Decision Making

- **Principal Makes Decision**
- **Informs Relevant Others**



Stage 5 School Action Plan

- **Plan Action as Necessary**
- **Ongoing program monitoring & Review of adjustments**
- Returning to Stage 2 (if necessary)