

## SCHOOL MISSION

St Bernard's Catholic school, founded by the Sisters of St Joseph, shares in the educational mission of the church as part of St Bernard's Parish

OUR VISION Learning is child-centred, where children are prepared as life-long learners to meet challenges as compassionate Christian members of our community. OUR MISSION To develop and nurture an environment where children learn about themselves, their world and God:

- By working in partnership with families, staff and the parish community –
- By valuing the diversity of all members of our community
- By experiencing and living a Christian life in the Catholic faith.

**“Your light guides”**

## St Bernard's Primary School

1823 Logan Road Upper Mt Gravatt

### SCHOOL CONTACT DETAILS

Phone: 07 3849 4800

Email: [pupmtgravatt@bne.catholic.edu.au](mailto:pupmtgravatt@bne.catholic.edu.au)

### SCHOOL CONTACT PERSONNEL

*Principal – Patricia McMahon*

*APRE – Nick Deveraux*

*Support Teacher (IE) –*

*Belinda O'Callaghan*

*Guidance Counsellor –*

*Kirsteen Bostock*



**Brisbane  
Catholic  
Education**

teaching • challenging • transforming

## Enrolment Application and Support Procedures for Students Requiring Significant Educational Adjustments



## INTRODUCTION AND RATIONALE

The Enrolment Application and Support Procedure (EASP) reflects the ongoing commitment of Brisbane Catholic Education (BCE) towards inclusive practices in schools and is guided by the principles of justice as reflected in Church, education, and legal areas.

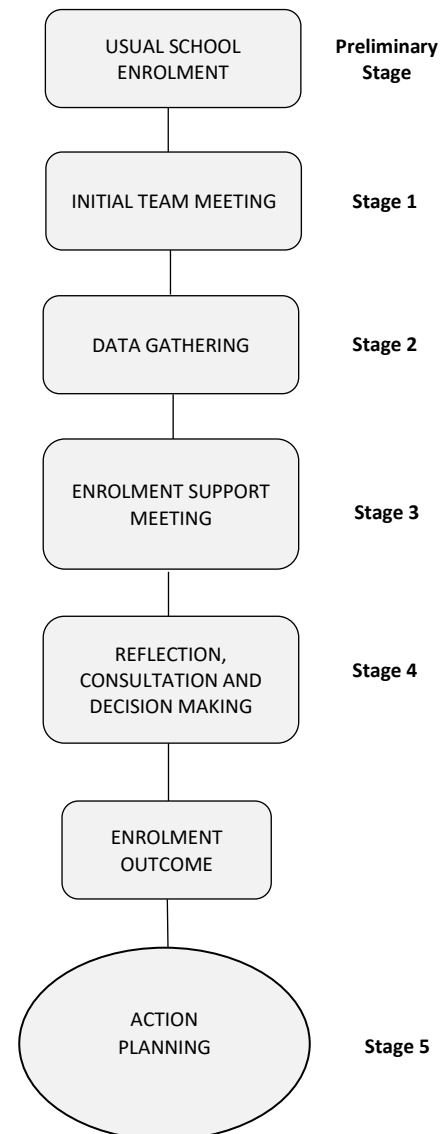
The consultation process seeks to reveal and clarify:

- The characteristics of the learner including impact of the disability
- The educational adjustments that are required for learning
- The implications of adjustments for the student, family and school

The EASP is to be applied for:

- Initial enrolment consideration: When application for enrolment is made on behalf of a student for whom it is considered likely that educational adjustments will be required to enable the student to participate in the curriculum and use facilities on the same basis as students without a disability

## ENROLMENT APPLICATION AND SUPPORT PROCEDURES For Students Requiring Significant Educational Adjustments



### Preliminary Stage

- Make application for enrolment

### Stage 1 – Parent Meeting

- Student Enrolment Team is formed
- Partnership formed

### Stage 2 – Data Gathering

- Observe/Collect data
- Explore educational adjustments

### Stage 3 – Enrolment Support Meeting

- Examine implications
- Information is shared, discussed, and clarified

### Stage 4 – Reflection, Consultation and Decision Making

- Principal in consultation with Student Enrolment Support Team makes decision
- Principal communicates decision to student's associates in writing

### Stage 5 – Action Planning

- Appoint Case Manager
- Develop School Action Plan